

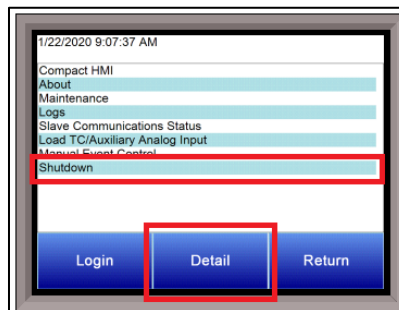
TOUCHSCREEN CALIBRATION PROCEDURES

For ADVANTECH Touchscreens

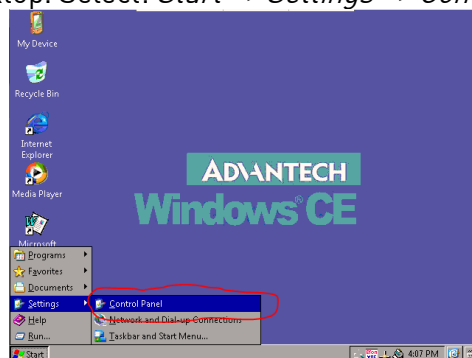
- From the main screen click the *Menu* button, then again on the second *Menu* button.



- Highlight *Shutdown* from the list and click *Detail*.



- Click *Yes* to shut down the SSi interface.
- You are now at the desktop. Select: *Start => Settings => Control Panel*





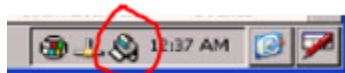
- On the ensuing window, double-click the *Stylus* icon.



- Select the Calibration tab and click *Recalibrate*.



- Follow the on-screen instructions.
 - NOTE: For each step, hold the stylus in the center of the icon *for approx. 2 seconds* before it moves to the next step.
 - Repeat the touch and hold process approx. 5 times.
- When finished, tap the screen anywhere.
- Cycle power or tap the icon shown below to restart the SSI interface.



- If the calibration process fails, or results do not improve, please contact SSI Technical Support at 513.772.0060 for assistance.

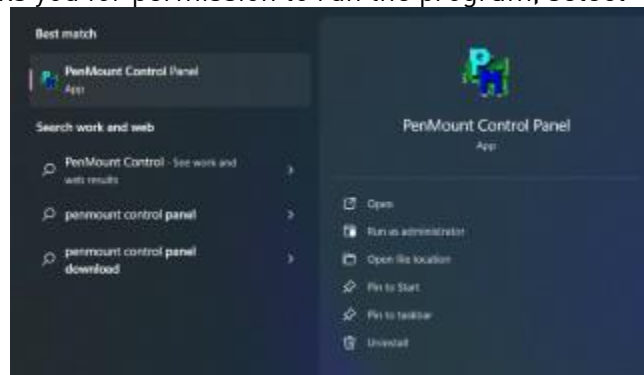


For TEGUAR Touchscreens

- From the main screen click on the MENU button.
- Highlight SHUTDOWN from the list and click “Detail.”
- Click “Yes” to shut down the SSi interface.
- You are now at the desktop.
- Click on the Windows search bar in the bottom left of the screen and search for “PenMount Control Panel.” The Windows search bar should appear like one of the two images below:

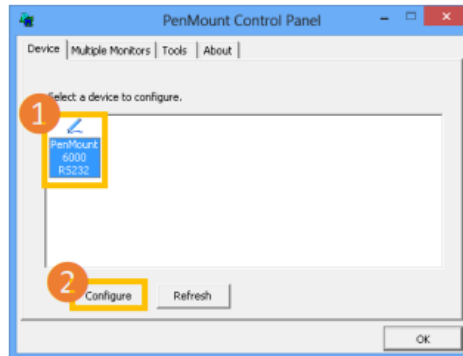


- Click on “PenMount Control Panel” from the search results to launch the program. If your screen asks you for permission to run the program, select “yes.”

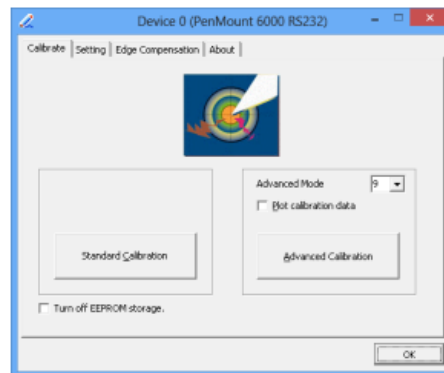




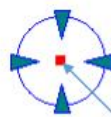
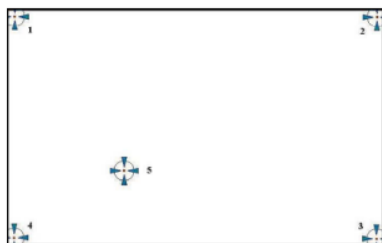
- Click on the device you wish to configure. Click to highlight, then click the “Configure” button.



- When the configuration window opens, click on “Standard Calibration” to begin performing a normal calibration.



- The Standard Calibration function uses four points for calibration and one point for confirmation. Under normal circumstances, standard calibration is all you need to perform an accurate calibration.
 - For best results, use a stylus and press on the red dot until the program prompts “Lift off to proceed.” Using your finger often gives bad results.
 - The last point is called the verification point. The screen will only pass the verification when the calibrated position is located within a predefined range.



Touch the red square.

Hold...

Lift off to proceed



- If the calibration does not pass verification, the screen will ask to approve the calibration data. Only select “Yes” if you really can accept the inaccurate result. Select “No” to restart the calibration process.
- When finished, cycle power to restart the SSi interface.
- If the unit does not successfully calibrate after three attempts, the calibration process will fail. If your unit will not successfully calibrate after following these instructions, please contact SSi Technical Support at 513.772.0060 for assistance.